



RECP #: 752678

RECORDED 5/8/2019 AT 1:11 PM BK# 2620 PG# 1720  
Debra K. Lee, CLERK OF LARAMIE COUNTY, WY PAGE 1 OF 1

# STATE OF WYOMING CORNER RECORD

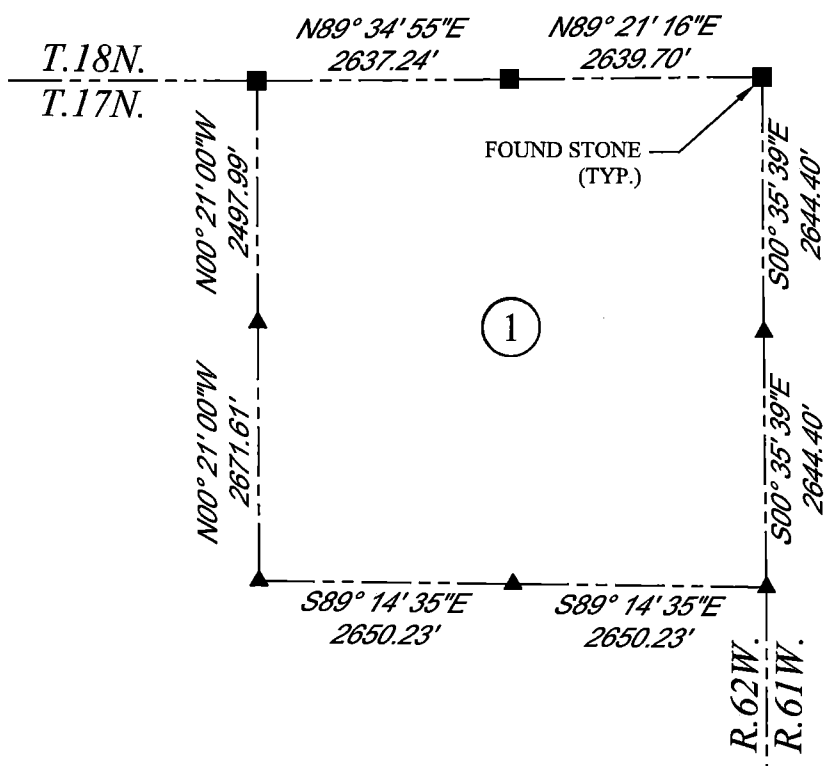
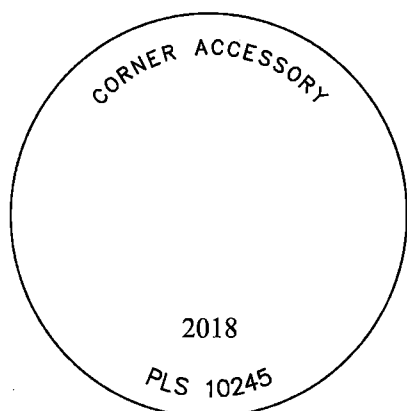
(In compliance with the CORNER PERPETUATION AND FILING ACT, Wyoming Statutes, 1997 Section 33-29-140, et. seq., and the Rules and Regulations of the Board of Registrations for Professional Engineers and Professional Land Surveyors)

## NORTHEAST CORNER SECTION 6, T. 17 N., R. 61 W., 6TH P.M., LARAMIE COUNTY, WYOMING

**GLO:** SET A LIMESTONE 20X18X8. 15" DEEP WITH 6 NOTCHES ON EACH OF THE 4 EDGES AND SET TO THE CARDINAL POINT AND RAISED A MOUND OF STONE AROUND IT FOR COR. TO TOWNSHIPS 17 AND 18 NORTH, RANGES 61 AND 62 WEST.  
**FOUND:** FIRM SET LIMESTONE APPROX. 14X15X4, WITH 5 VISIBLE NOTCHES ON N & S FACES AND 2 NOTCHES ON E & W FACES, STONE WAS 0.1' ABOVE SURFACE.  
**SET:** 3.25" ALUMINUM CAP ON #5 REBAR, 2" ABOVE SURFACE, MARKED AS SHOWN, SET ON SOUTH SIDE OF FOUND FIRM SET LIMESTONE WITH MARKINGS, CORNER IS DIRECTLY UNDER N & S FENCE LINE.



SCALE: NONE  
NORTH DETERMINED BY  
G.P.S OBSERVATIONS



### LEGEND:

- FOUND BLM CAP
- FOUND USFS CAP
- FOUND STONE
- FOUND PRIVATE MONUMENT
- ◆ CALCULATED POSITION
- ▲ SET MONUMENT (LS10245)
- SECTION LINE

DATE OF FIELD WORK: 10/02/2018 OFFICE REFERENCE: MERIDEN

### CROSS INDEX DIAGRAM

A	1	2	3	4	5	6	7	8	9	10	11	12	13	14	15	16	17	18	19	20	21	22	23	24	25	A
B																										B
C		6			5			4					3						2							C
D																										D
E																										E
F																										F
G																										G
H																										H
J																										J
K																										K
L																										L
M																										M
N																										N
O																										O
P																										P
Q																										Q
R																										R
S																										S
T																										T
U																										U
V																										V
W																										W
X																										X
Y																										Y
Z																										Z
	1	2	3	4	5	6	7	8	9	10	11	12	13	14	15	16	17	18	19	20	21	22	23	24	25	

WOOD  
2615 AVIATION DRIVE  
SHERIDAN, WY 82801  
PH: 307-675-6400



THIS CORNER RECORD WAS  
PREPARED BY ME OR UNDER  
MY DIRECTION AND  
SUPERVISION,  
SEAL AND SIGNATURE

